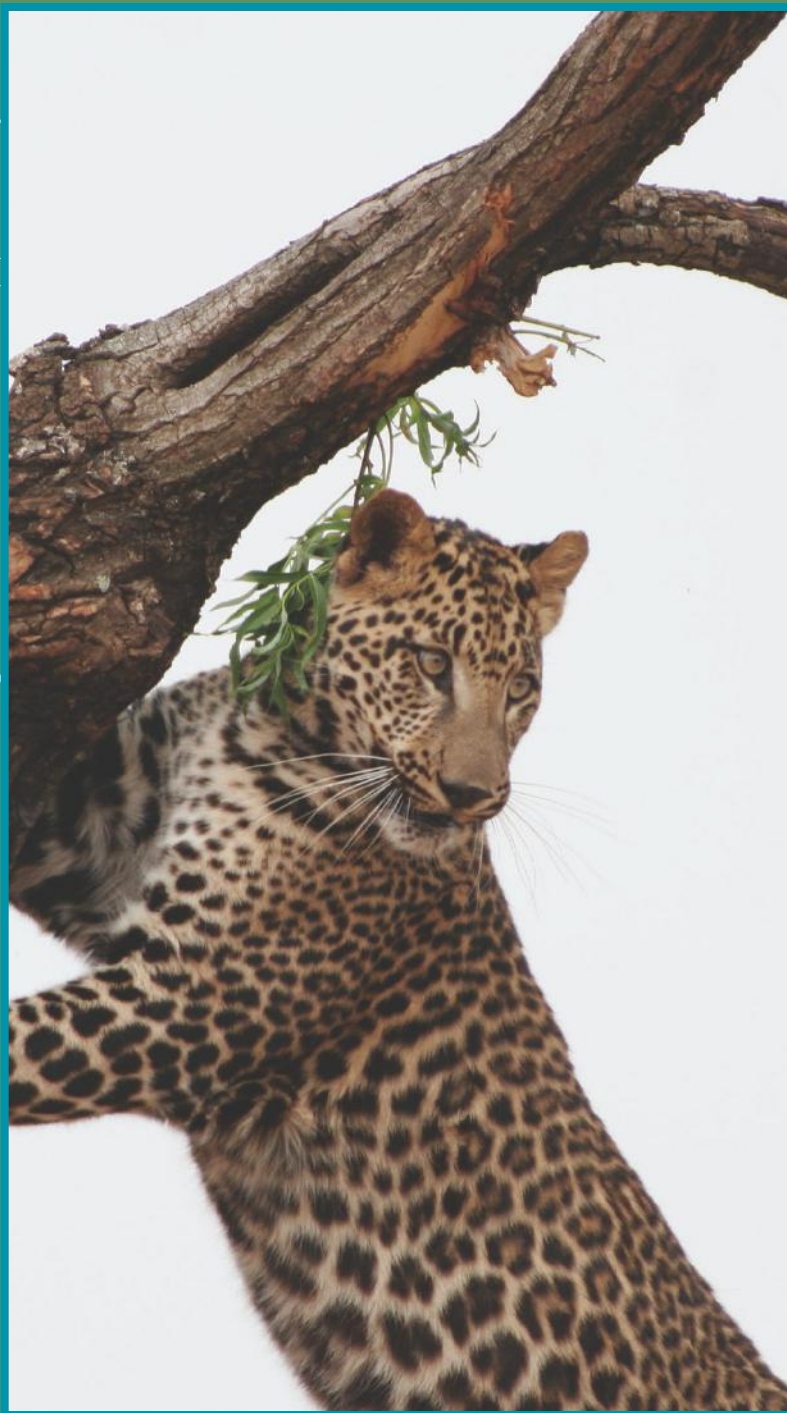




Bio-Bridge Initiative

Operations Guide





Cultivating Technical & Scientific Cooperation

The core of the Bio-Bridge Initiative (BBI) is collaboration. BBI operates much like a matchmaking platform that aims to cultivate technical and scientific cooperation between countries and institutions.

The Bio-Bridge Initiative (BBI) connects Parties who require assistance to address their biodiversity related challenges with Parties or institutions who are in a position to respond to those needs through mutual partnerships, through the deployment of existing services, and through the incubation of new initiatives. The mission of BBI is to foster and facilitate technical and scientific cooperation among Parties and institutions in order to prevent the loss of biological diversity on a global scale.



Ministry of Environment



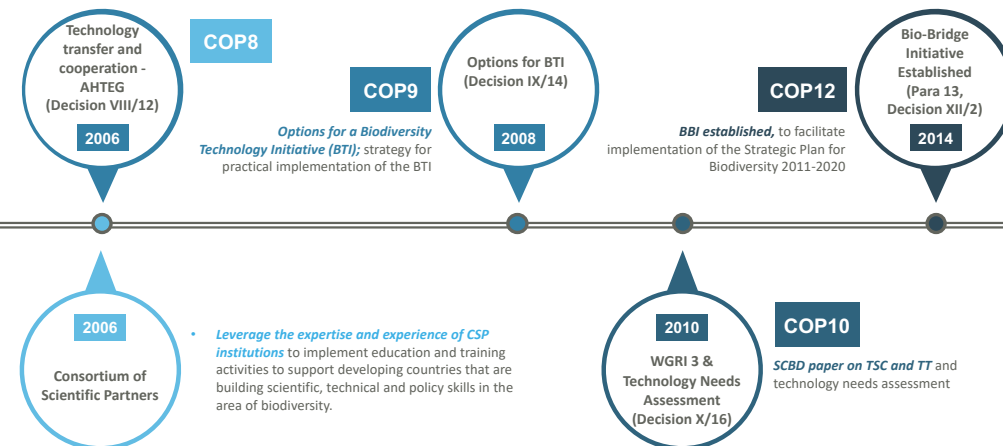
Convention on
Biological Diversity

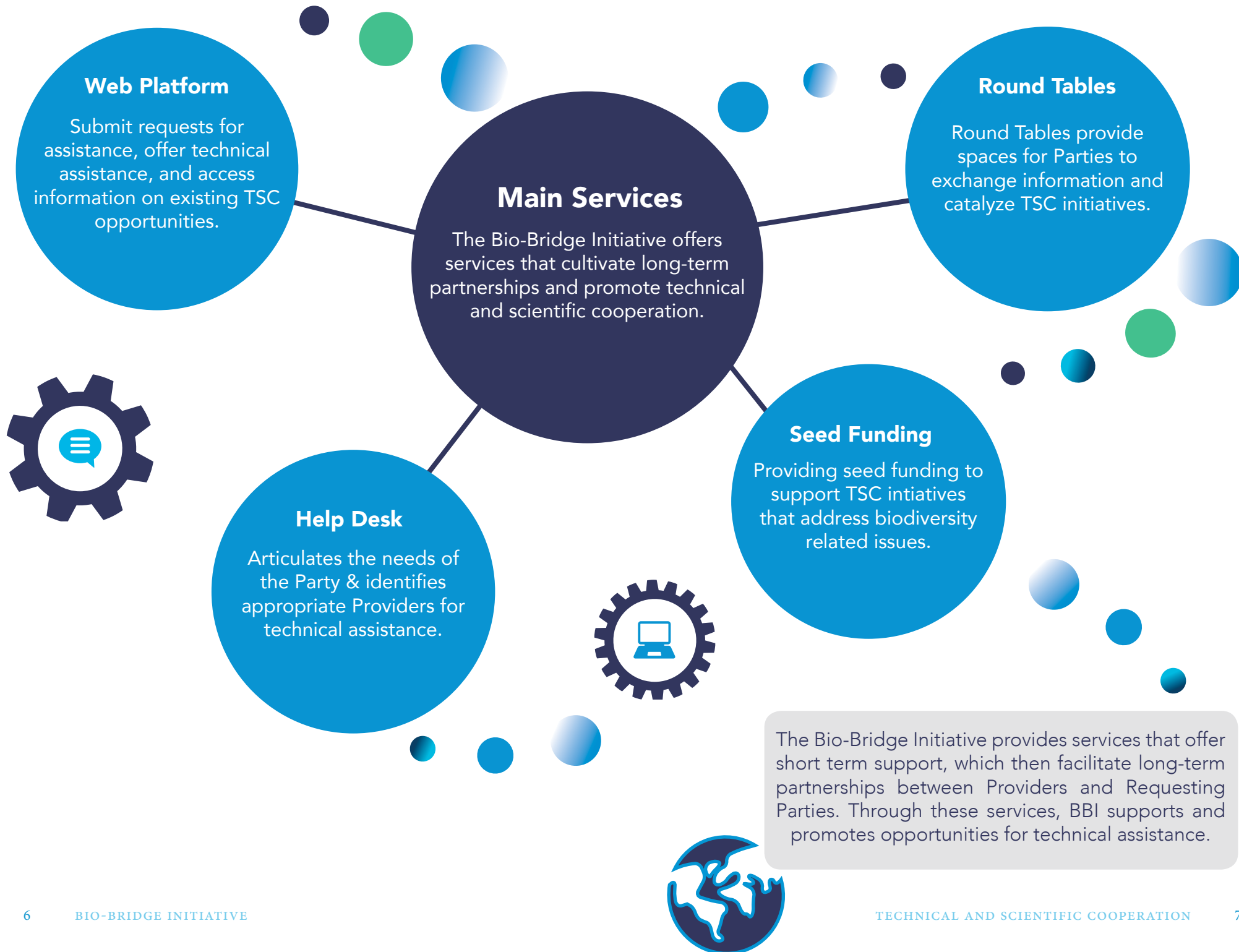


BBI Overview & Timeline

Established at the twelfth meeting of the Conference of the Parties to the Convention on Biological Diversity, with initial funding from the Government of the Republic of Korea, the Bio-Bridge Initiative (BBI) is a programme that facilitates technical and scientific cooperation (TSC) among Parties to the Convention and to its Protocols.

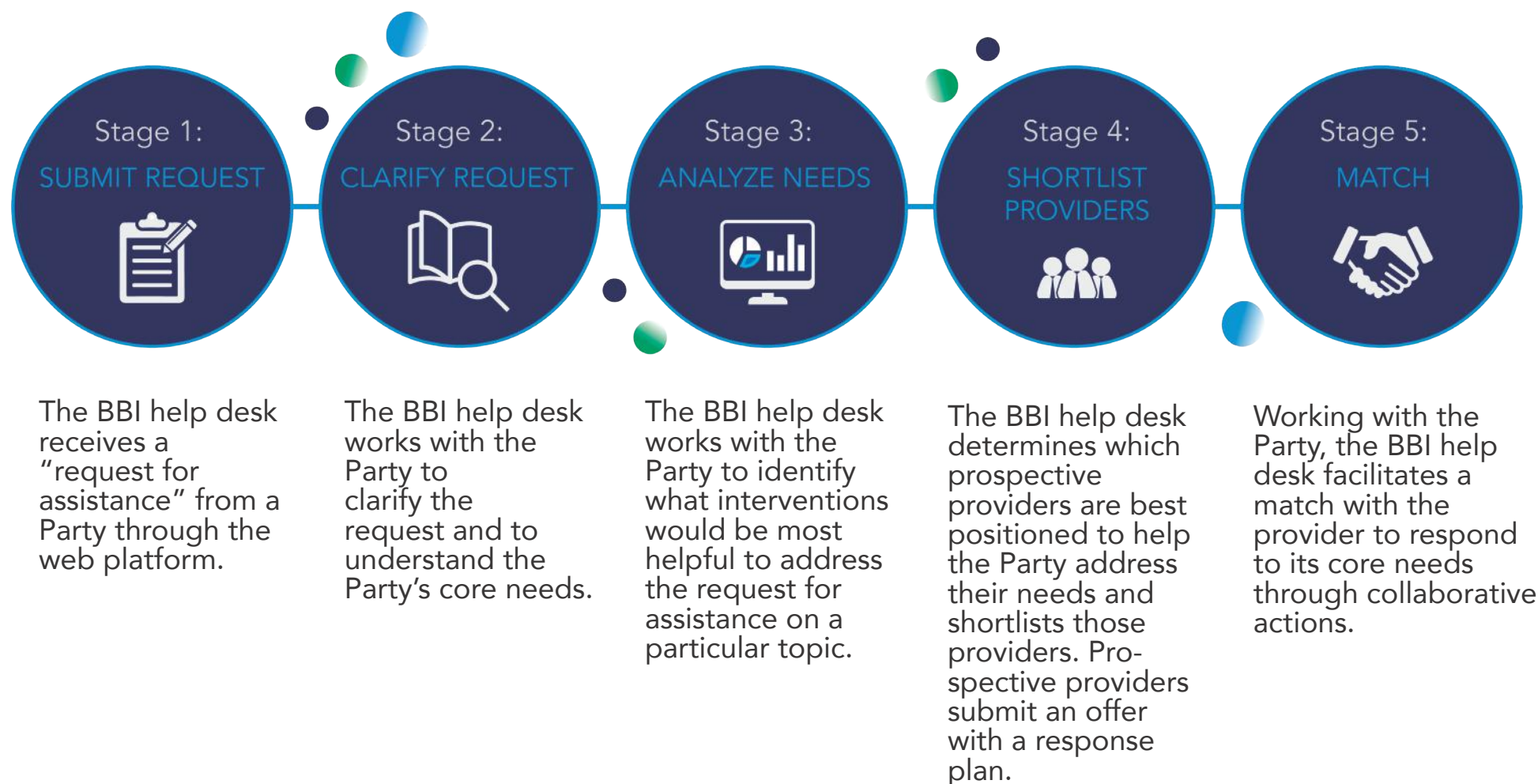
Since its inception in October 2014, BBI has incubated several technical and scientific cooperation projects and partnerships. BBI has also helped to strengthen the institutional capacities of both countries and institutions, which has promoted better conservation outcomes.





BBI Help Desk Process Flow

The BBI help desk offers a service, which helps requesting Parties articulate their core needs and identifies appropriate providers that can offer technical assistance.

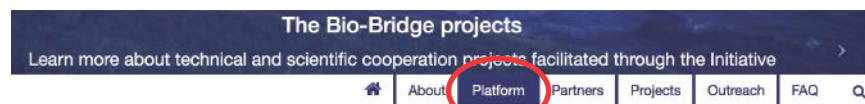


Web Platform

The interactive web platform hosted on BBI's website enables Parties to submit requests for assistance, offer support to respond to needs, and access databases of information on project proposals and existing opportunities.

Part of the platform is the matchmaking service, which short-lists potential matches among possible providers, and then the requesting Party selects its preferred providers of technical assistance.

BBI's interactive web platform can be accessed through BBI's main website: www.cbd.int/bio-bridge



User Guide



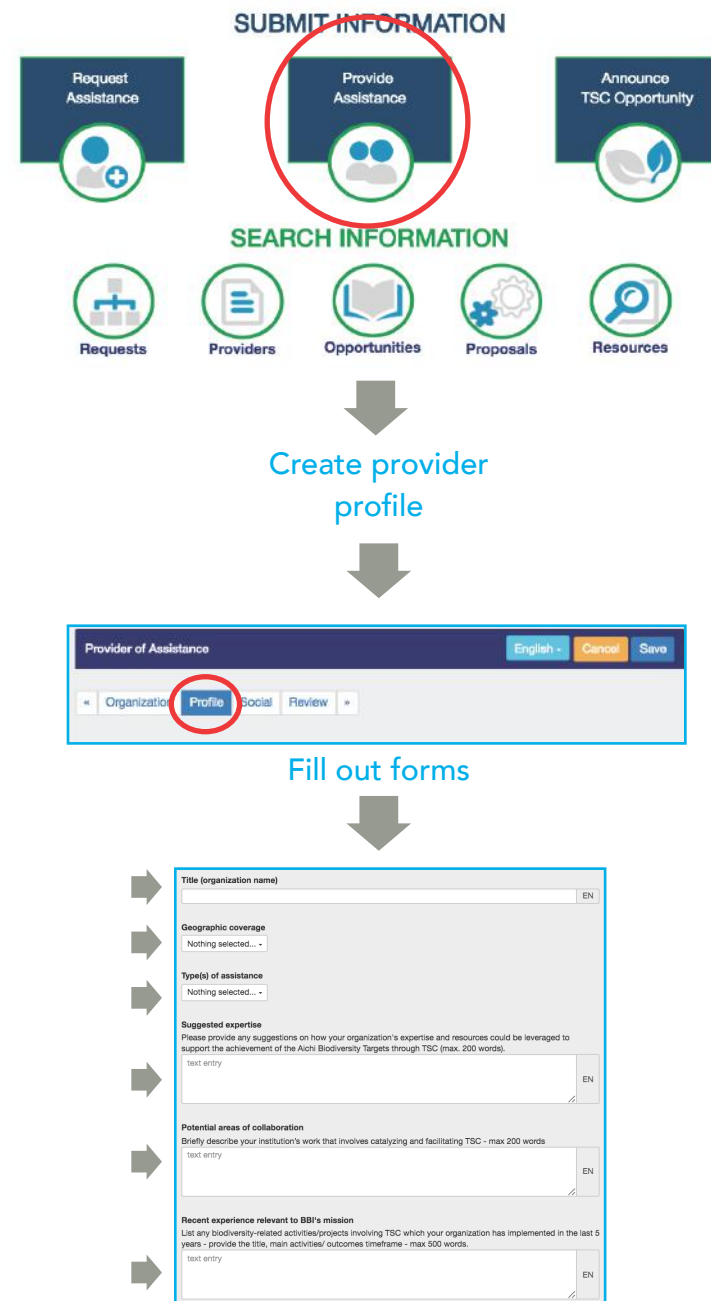
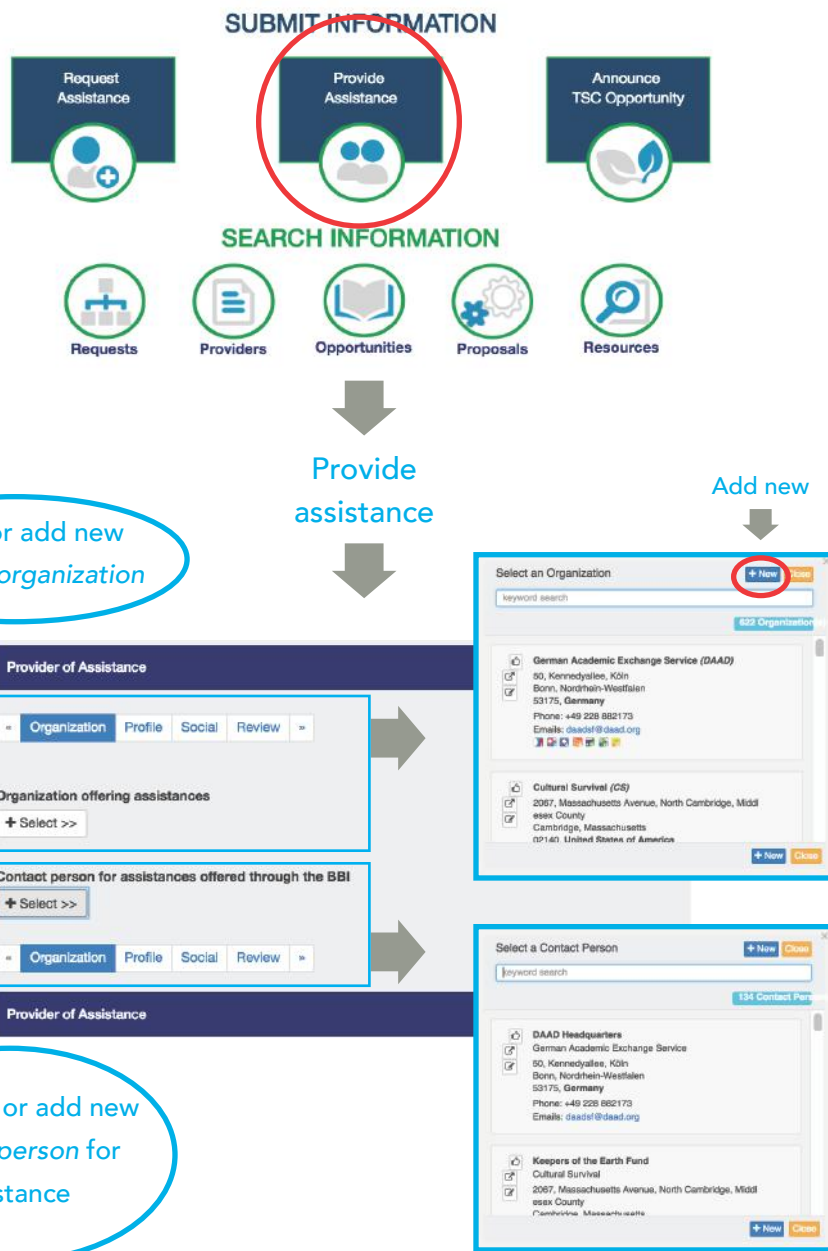
Request assistance

Fill out forms

A screenshot of the 'Request Assistance' form. The form has a tabbed interface with 'General' selected. The 'General' tab contains several sections: 'Geographic target(s)' with a dropdown menu (currently showing 'Nothing selected...'), 'Title of request', 'Problem statement' (with a text area), and 'Assistance Types' (with a list of options and a 'Nothing selected...' dropdown). The form also includes a language selector (EN) and a 'Proceed' button.

To begin, you will need to create an account or login

A screenshot of the 'Authentication Required' dialog box. The dialog box has a title bar with the 'Convention on Biological Diversity' logo. The main text reads: 'You are entering an area that requires authentication. You are being redirected to accounts.cbd.int in order to: 1. Sign in; or 2. Create an account. Once authorized you will be redirected back to your intended destination.' At the bottom, there is a checkbox labeled 'Do not show this warning again.' and two buttons: 'Proceed to accounts.cbd.int' and 'Cancel'.



SUBMIT INFORMATION

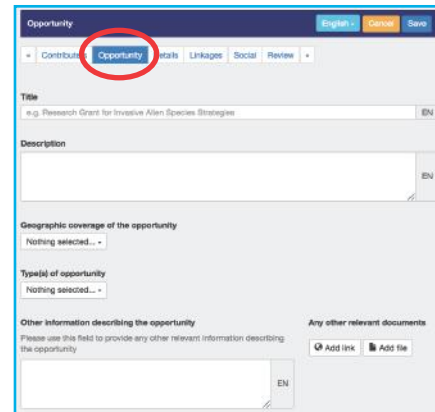
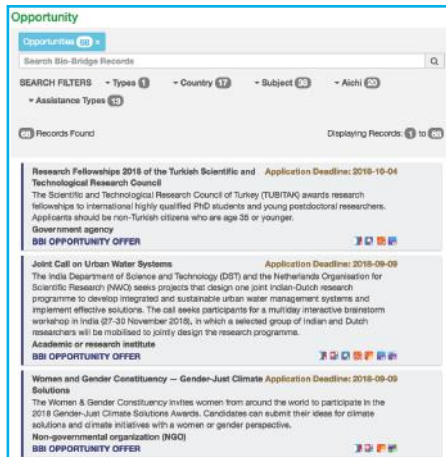


SEARCH INFORMATION



Access existing
opportunities
database

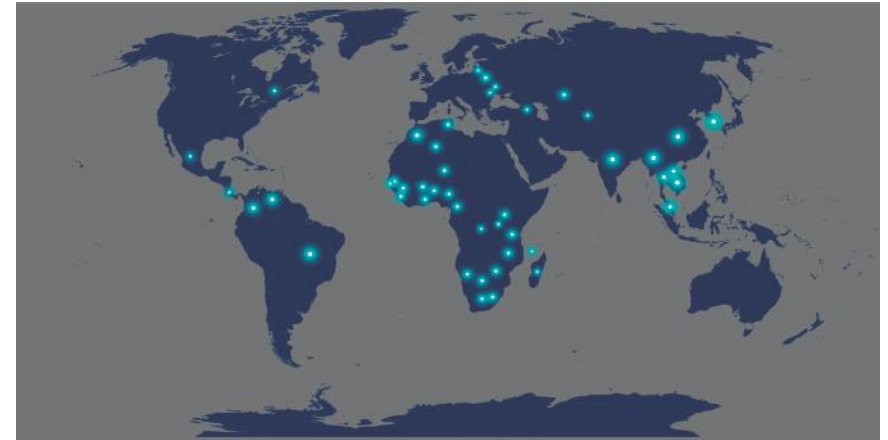
Announce TSC
opportunity



ALL DATABASES



Seed Funding



The above map shows the partnerships that have been catalyzed through BBI projects to date.

As part of its mandate to catalyse and facilitate technical and scientific cooperation, the Bio-Bridge Initiative (BBI) currently provides seed funding of up to \$20,000 to incubate projects and partnerships involving two or more countries that promote exemplary approaches, particularly through South-South and triangular cooperation, for addressing biodiversity-related challenges, and that showcase good practices and lessons learned.

To date, 9 projects facilitated through BBI have catalyzed 35 partnerships. Out of four of BBI's initial pilot projects, half of those projects have expanded and are currently operating independently of BBI.

These projects and partnerships facilitate the development of networks of expertise and providers of technical assistance on specific biodiversity-related topics, which enables countries to develop their institutional capacities and promotes global, cooperative action.

Demonstration Projects



Belarus

Regional cooperation between countries of Central Eastern Europe on the use of DNA barcoding technologies for species identification.



Colombia

Establishing a network of code developers on species assessment tool in collaboration with Brazil, Mexico and South Africa.



China

Regional cooperation with the Republic of Korea and other Asian countries to document traditional knowledge related to genetic resources and the advancement of biodiversity.



Venezuela

Promoting the conservation and sustainable use of orchids in collaboration with Costa Rica.



Morocco

Establishing a network of ABS legal experts in Francophone Africa, involving 10 countries.



India

Working collaboratively with Seoul University on Asian big cats genetic conservation and the development of DNA technologies.



Zimbabwe

Strengthening regional collaboration on the establishment of a regional biobank of invasive alien species along with South Africa, Botswana, Malawi, and more.



Malawi

Integrating biodiversity values into national, sectoral and local development policies, plans and accounting systems in collaboration with Botswana and Uganda.



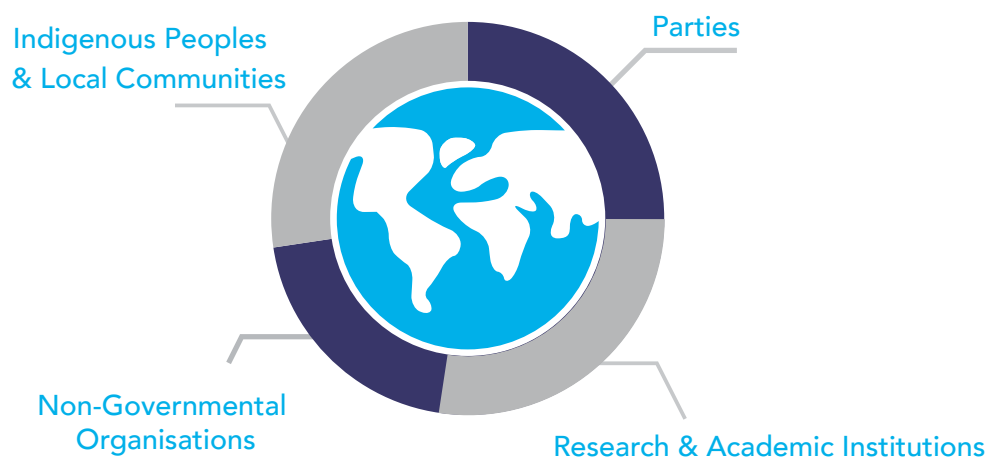
Ghana

Regional cooperation in Anglophone West Africa on national Ecosystem Natural Capital Accounting systems.

Project Selection Criteria

Seed funding support may be provided to catalyze the development of project proposals involving two or more countries, which promote exemplary technical and scientific cooperation approaches to address biodiversity related issues and challenges.

Who Can Apply?



The Bio-Bridge Initiative has developed a three-step process and corresponding selection criteria to facilitate a robust and transparent assessment of the project proposals submitted.

3-Step Process



Step 1: Eligibility Assessment

The help desk screens all submitted proposals against the eligibility criteria. A proposal must meet all the criteria in order to be accepted for further consideration.

Step 2: Quality Assessment

The help desk reviews the eligible proposals and scores them against a second set of criteria. Proposals with a score of 80% or higher are submitted to the Project Review Panel for the technical assessment step. While proposals with a score below 80% will not be considered further, the help desk may follow up with their proponents to register them as requests for assistance for possible matchmaking.

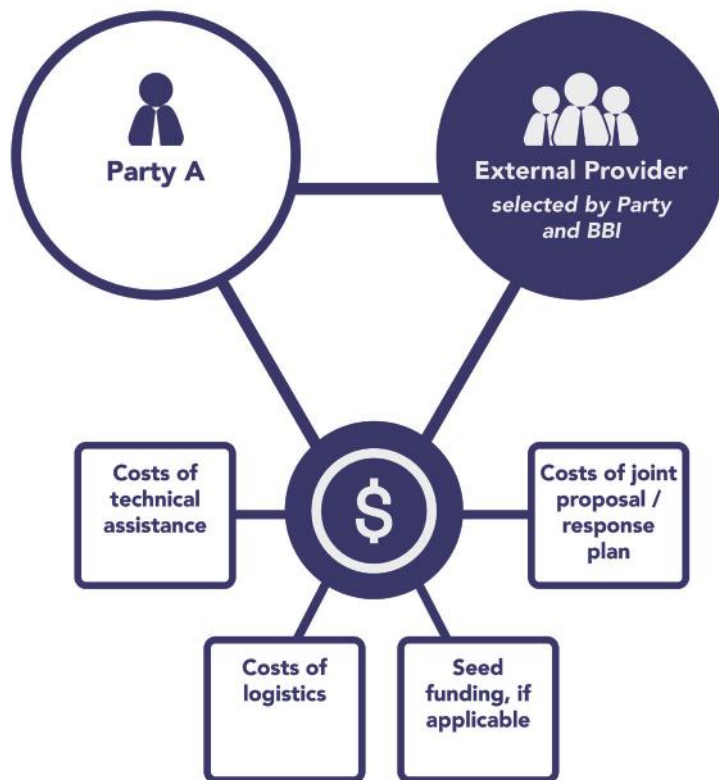
Step 3: Technical Assessment

Selected proposals are submitted to the Project Review Panel (PRP) who provide a third review against the third set of criteria. The Chairperson of the Panel convenes a meeting to agree on the final selection of projects to be recommended to the Executive Secretary for support.

Joint Proposals

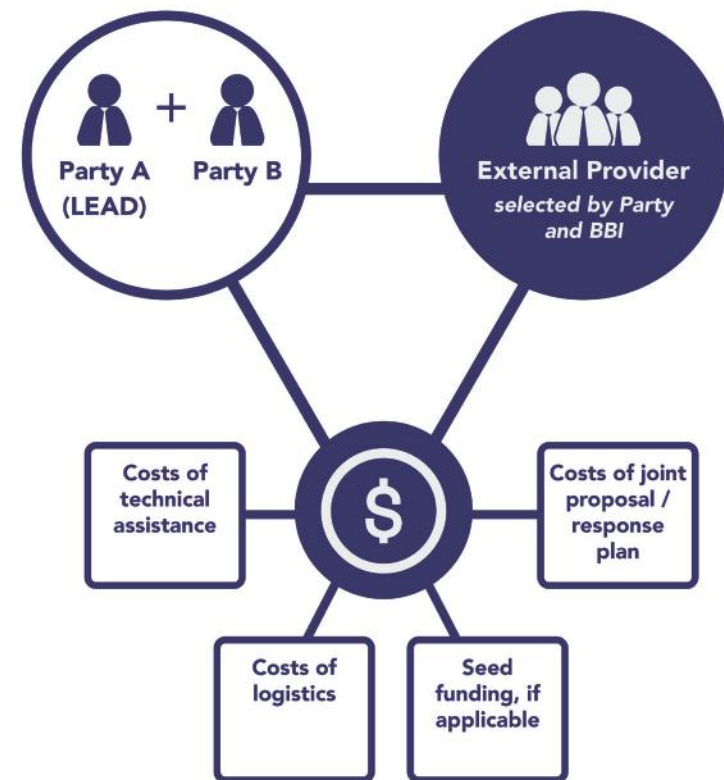
Scenario 1

Single Party request

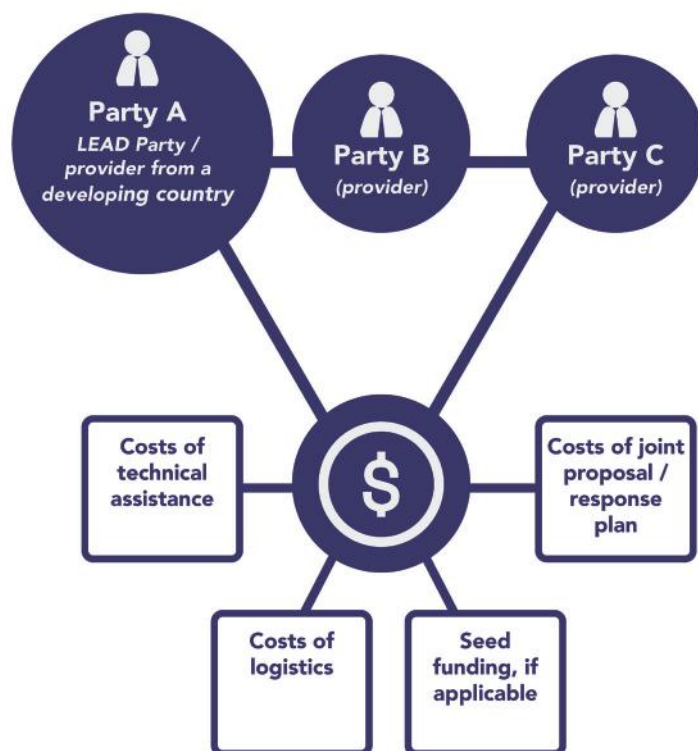


Scenario 2

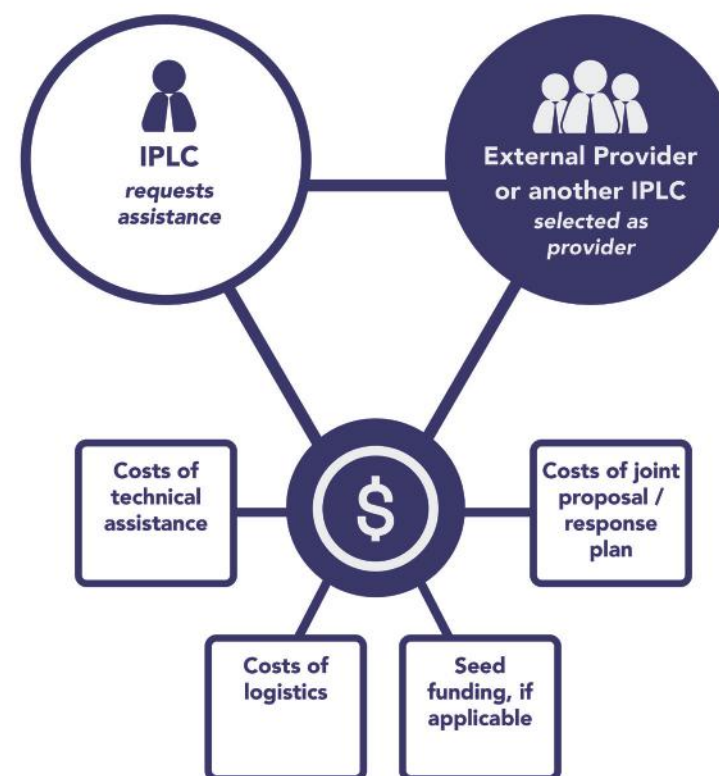
Joint request by multiple Parties



Joint multi-Party collaboration led by a developing country Party / provider



IPLC request for assistance



Round Tables

Round tables facilitated by BBI provide a mechanism through which Parties and experts can exchange information, articulate needs, foster networks and partnerships, and catalyze technical and scientific cooperation (TSC) initiatives.



Round tables, like the ones pictured above and below, facilitate discussions on best practices and lessons learned, and facilitate the development of extensive plans for the implementation of regional and global initiatives.



Priority Needs

From a demand driven approach, the Bio-Bridge Initiative has outlined the priority needs that a sample selection of countries have articulated are most important to achieve their biodiversity related challenges. The data (represented on the following page) was collected through discussions and surveys during regional roundtables, and represents the results from different regions.

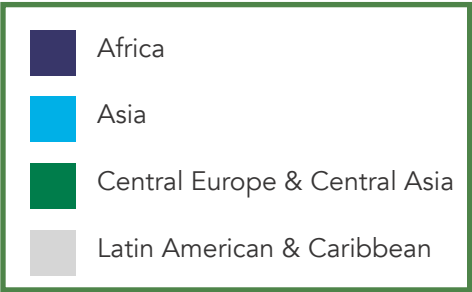
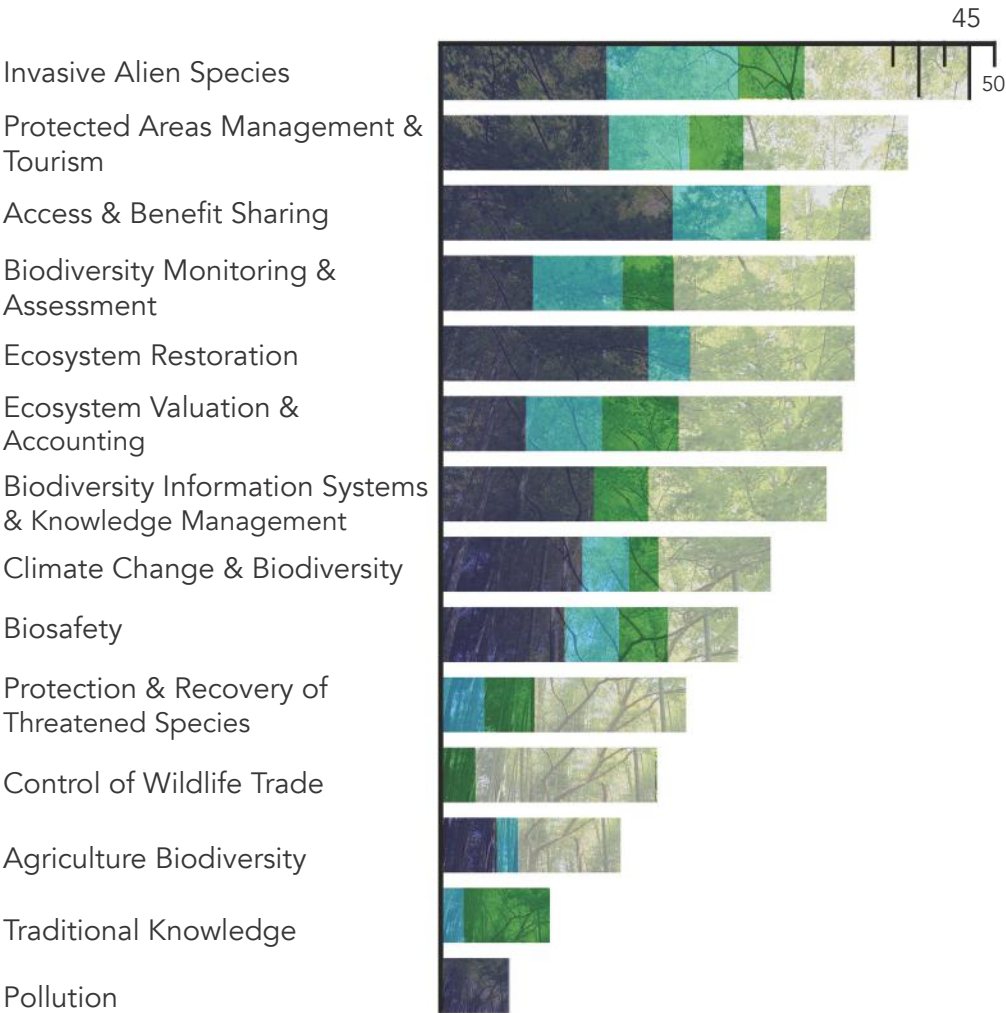
Those regions include the following:

- Africa (29 countries + IPLCs)
- Asia (21 countries + IPLCs)
- Central Europe & Central Asia (12 countries + IPLCs)
- Latin America & Caribbean (20 countries + IPLCs)

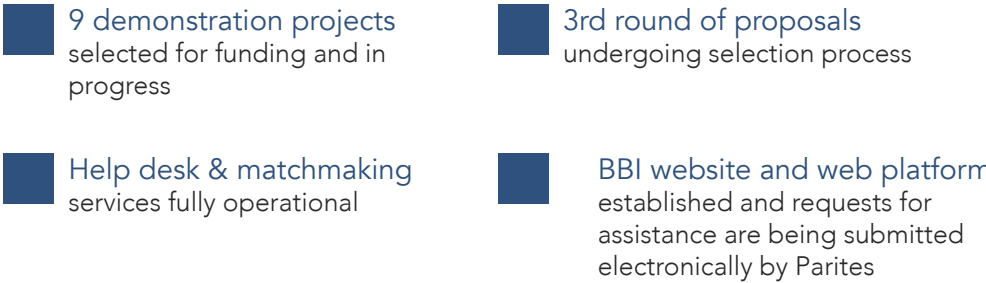
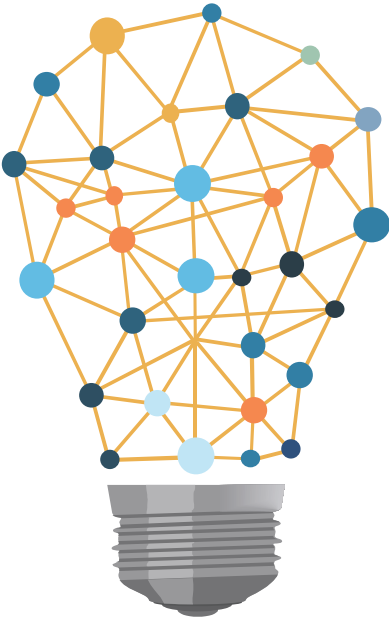
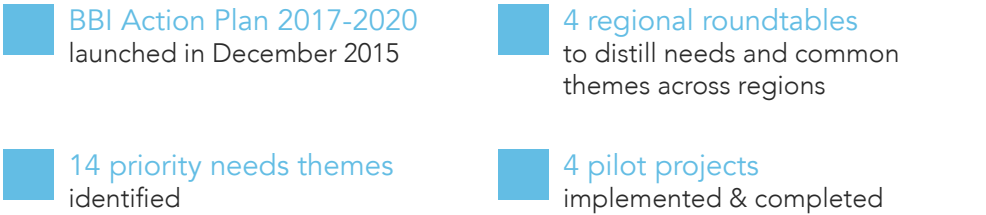
These priority needs offer a starting point that opens dialogue between Parties and providers, and from which Parties and providers can focus their efforts for technical assistance, as well as cooperative projects. The priority needs also facilitate the matchmaking process, and guide the selection process for the seed funding facility that supports technical and scientific cooperation projects involving two or more countries.



Thematic Areas



BBI Progress to Date





To date, 35 partnerships have been catalyzed through projects facilitated by BBI.

To date, 17 requests have been addressed through the matchmaking service on the BBI web platform.



